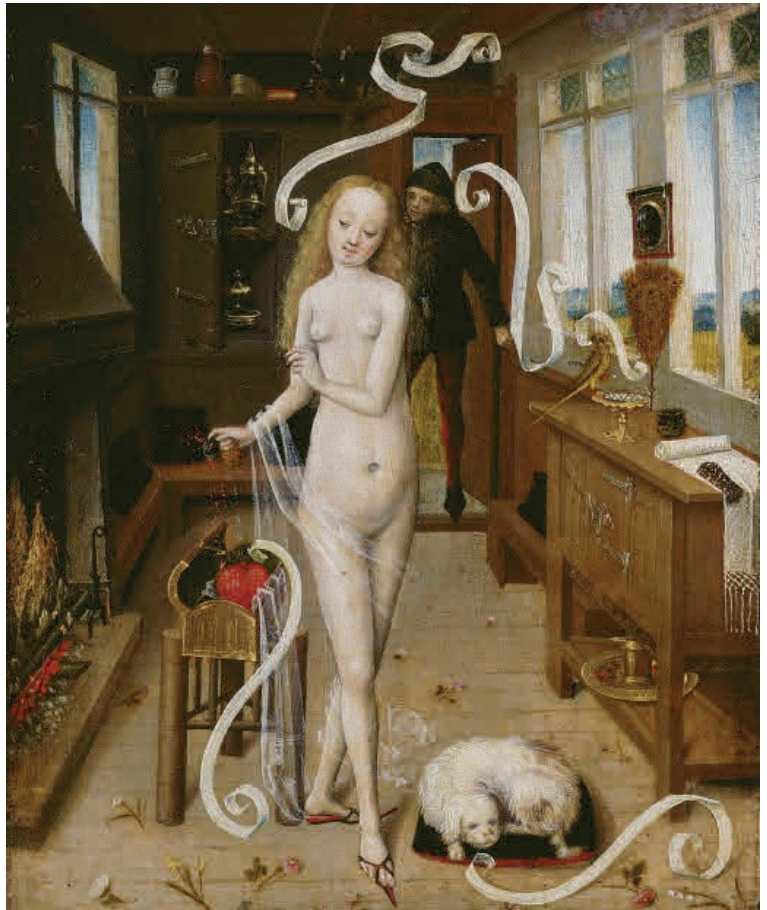




London Medieval Society

The London Medieval Society founded 1945



Magic & Miracles

London Medieval Society

Saturday 28th February, 2015

Lock Keeper's Cottage,
Queen Mary, University of London,
Mile End, London E1 4NS

This **London Medieval Society Colloquium 'Magic and Miracles'** springs from Robert Bartlett's Wylie lectures on the natural and the supernatural, and the medieval discourse on the problematic differences between magic and miracles. There is still no detailed academic work utilising both sets of sources, which is why we thought it would be an excellent colloquium topic. Our speakers include:

Sophie Page (UCL) her latest book is *Magic in the Cloister*

Hilary Powell (Durham, AHRC project: Hearing the Voice) miracle cures, voice hearing, and saintly apparitions

Jacqueline Borsje (Amsterdam) is an expert on Magic and Miracle in Medieval Ireland

Hetta Howes, (QMUL) focusses on female tears, charms and medieval affective piety

In this 15th Century painting (used by Keith Thomas for his seminal *Decline of Magic*) now in Leipzig Kunst Museum the woman sprinkles embers on to a wax heart so that in sympathetic magic, the heart of her lover will melt and handily he has just arrived. How far was this 'magic' acceptable, how is it connected to the idea that sinners' tears will melt Christ's heart?

Book via Eventbrite LMS 28 February 2015 Magic & Miracles: £10/5/free to members, or see our new website:

<http://londonmedievalsociety.com/>